



MEDITECH Collaborative Update

March 5, 2024



MEDITECH Collaborative

Our Shared Vision

Create a connected and interoperable healthcare system, where silos and fragmentation are eliminated. Improving the patient's journey through the health system, so it is more efficient and better serves patient's needs.



North Bay Regional Health Centre
Centre régional de santé de North Bay



Interoperability

MEDITECH



Standardization

Develop a collaboration space where sites can share and exchange best practices, clinical dictionary content, and workflows. Sites are also providing access to each others test/development environments. This work will assist in aligning functionality across MEDITECH Collaborative sites

Early Adopter Projects that will be leveraged by all



Governance

Collaborative Governance Structure

CEO Council

CIO Council

CMIO Council

CNIO Council

Workgroups

Process Standards WG

Content Standards WG

Inter-operability WG

Privacy & Security WG

Clinical Standards WG



Our goal is to facilitate Care Everywhere with Prediction

We will lay the foundation for population health that is person-driven, people-powered and hyper personalized¹.

The foundation is an:

Intelligent Information Exchange “fabric” that supports seamless aggregation of the right information, for the right people, at the right time, and made available in the right application

With the maturation of IHE profiles, HL7 FHIR, personal health applications and AI platforms:

Intelligent Information Exchange fabric is now very real

With growing collaborative CIO leadership within the Ontario Collaboratives and Ontario Health Teams, combined with support from OH through the DHIEX working group:

One Patient One Record through a federation of many medical record instances is now a very real probability

Problem Statement

People struggle to access health and social care information and services in a simple and timely way. People want access anytime, anywhere, and in a way that is personalized to their needs. Access is needed to help people and their loved ones be proactive and live their healthiest life in the community.

“Care everywhere”

“Hyper personalization”

“Person-driven, people-powered”

“Predictive”

Interoperability

Progress To-date

1. Deployed Traverse Exchange Canada and connect (most) MEDITECH hospitals with FHIR gateways.
2. Exchanged CCDs with Cerner and EPIC Collaboratives
3. Integrated with Apple Health app.
4. Connected and sharing with Point Click Care
5. Exploring the use of genAI to determine “relevancy” at the HRH Research Institute



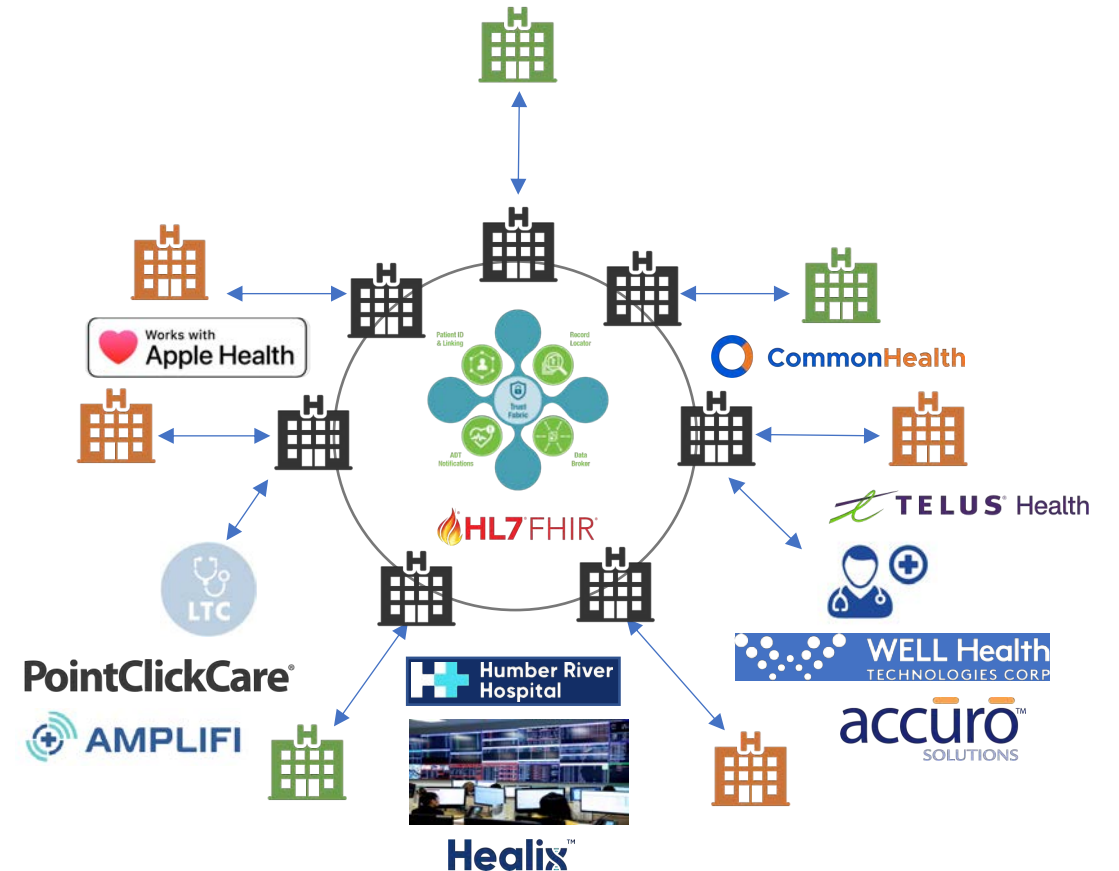
Primary Care sites

Long Term Care sites

EPIC sites

Cerner sites

Meditech sites



Standardization

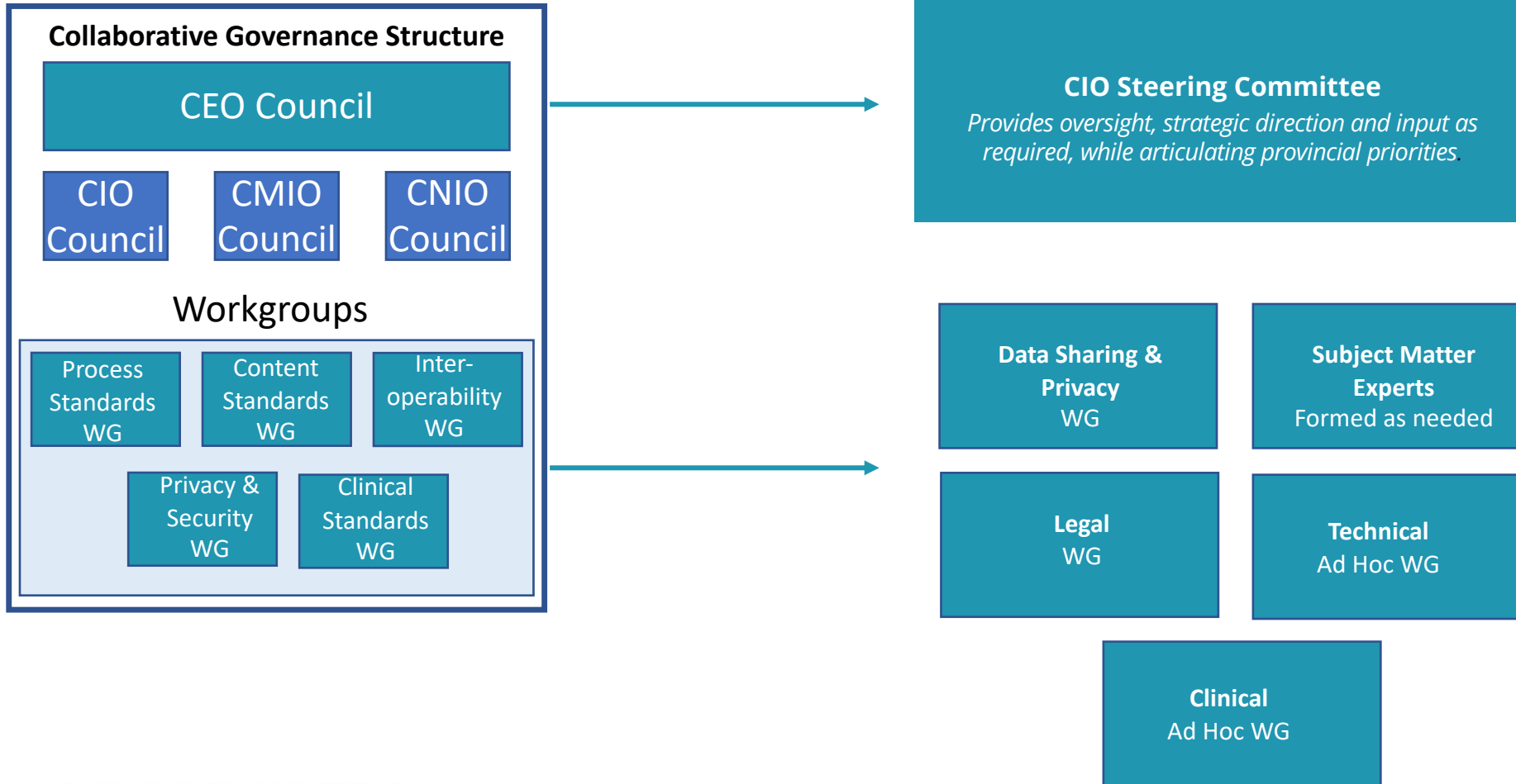
Progress To-Date

1. Ocean e-Referral
 - CHAMP has integrated with the Ocean e-Referral solution.
 - Other members are engaged in adoption of Ocean e-Referral
2. Novari MIRM
 - HRH has adopted/deployed Novari MIRM.
 - This is now ready for adoption by other members.
3. Novari ATC
 - QCH/Southlake/HRH have integrated with Novari ATC.
 - This is now ready for adoption by other members.
4. IIA Identos
 - Southlake (SHINE) participated in the IIA project and led the integration of MEDITECH Expanse with the IDENTOS digital front door.
 - This can now be replicated to other members of the Collaborative.
5. PrescribeIT
 - Collaborative negotiated a PrescribeIT contract with Infoway that is applicable for all members.
 - HRH will be first MEDITECH Expanse site to go live with PrescriBIT (March '24)
6. ED Virtual AI-Enabled Queue and Time Slot Management
 - HRH & Deloitte secured funding from ScaleAI to implement and deploy a novel “app” for managing ED volume.
 - Collaborative are participating as advisors with a goal to scale adoption if successful



Governance

Progress To-Date



Tri-Collaborative Update

Deliverable	Status
Provincial Cross-Collaborative Project Governance Framework Document	Complete
Summary of agreements, including privacy and data sharing agreements	Complete
Identify data elements to support care transitions for MH&A patients	Complete
Alignment of MH&A data set to other patient populations, to support transitions of care across the care continuum	Complete
Demonstrate the exchange, using C-CDA	Oracle/Epic - complete Oracle/Meditech - underway Meditech/Epic – underway
Defined transition plan to redirect all established provincial P2P connections to the provincial EHR	Draft complete
Demonstrate a compliant implementation of PS-ON R1 to provincial CDR	Underway – further fact finding with Ontario Health